



AKDAMARINE

SHIP REPAIR



WHO WE ARE

AKDAMARINE SHIP REPAIR IS THE INDUSTRY'S LEADING SHIP REPAIRER WITH EXPERTISE TO UNDERTAKE THE ENTIRE SPECTRUM OF REPAIR WORK FOR A VARIETY OF VESSELS.

OUR PARTNER SHIPYARDS TURKEY & CHINA

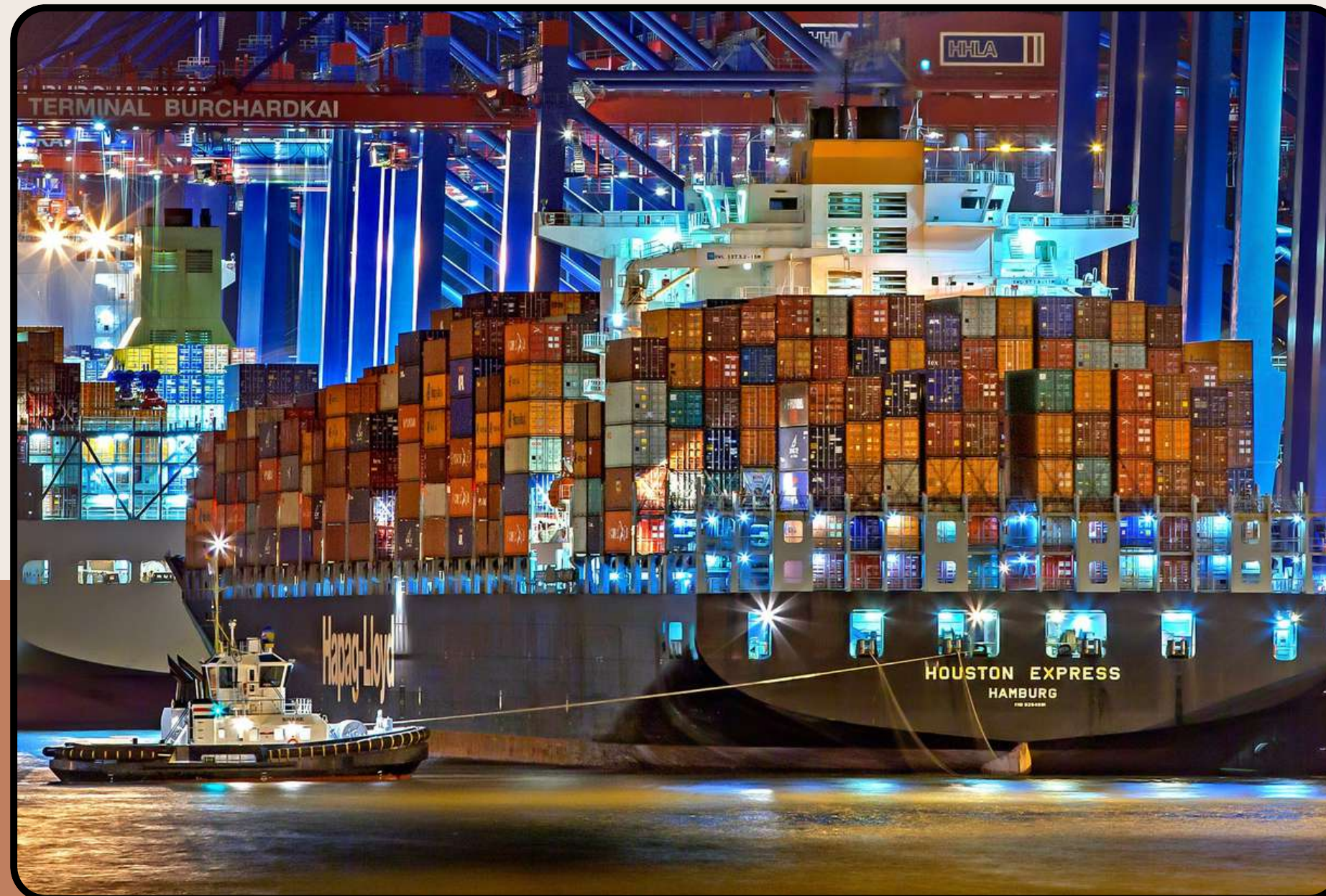
ALL TURKISH SHIPYARDS; TUZLA/YALOVA/IZMIR/DARDANELLES/CYPRUS

CHINA;

CUD (Weihai) SHIPYARD CO. & HUARUN DADONG DOCKYARD CO & COSCO SHIPPING HEAVY INDUSTRY CO & ZHOUSHAN HUAFENG SHIPYARD CO & PAXOCEAN ENGINEERING ZHOUSHAN CO & GUANGZHOU WENCHONG DOCKYARD CO & DALIAN SHIPBUILDING INDUSTRY CHANGXINGDAO SHIPYARD CO & RONGCHENG STONESTAR SHIP REPAIR CO...



AKDAMARINE SHIP REPAIR IS AN EXPERT FOR ANY SORT
OF CHALLENGING AFLOAT & DRYDOCKING REPAIRS
YOU MAY NEED TO PERFORM.



OUR COMPANY

Established within the structure of Akdamarine Ship Repair offers wide range of dry dock services, ship repair management, afloat and port repairs, ship supply and ship repair consulting and supervision by having more than 10 years of experience in all segments of shipyard services with qualified, highly experienced team.

AKDAMARINE SHIP REPAIR IS AN EXPERT FOR ANY SORT OF CHALLENGING AFLOAT & DRYDOCKING REPAIRS YOU MAY NEED TO PERFORM.



MISSION

To provide a service or product meeting our client requirements in an ethical, professional, safe and environmentally friendly manner; to create the difference in our industry with an effective and profitable service approach in line with the service value chain at international quality standards; to maintain efficiency and quality at a high level with our continuous growth approach; to treat employees with respect and ensure a healthy, positive and safe working environment.

VISION

To carry out ship repair and supply activities in full compliance with national and international rules; maintaining the highest quality with increasing our knowledge and experience; to be preferred by our clients with our competitiveness, customer satisfaction, to be trusted with our experience; to protect the environment with safety operations and adopting the environmental requirements all the time.

WHAT WE DO?



As Akdamarine Ship Repair, rather than contracting a shipyard for the full scope of the works, we prefer to hire yearly basis longterm slots for drydocks and a lay-by-berth space within a suitable yards. While standard dry-docking works are generally ordered to the hired shipyard, our dedicated sub-contractors are directly engaged to non-docking related works such as steel, piping, engine, machinery, electrical, hydraulic, radio-navigation and other specific works.

DRYDOCKING OF SHIPS ARE PART AND PARCEL OF AKDAMARINE SHIP REPAIR'S KNOW-HOW.

Having long-term agreements with reliable yards, workshops, subcontractors and various suppliers in Tuzla, Yalova, İzmir and Çanakkale regions of Turkey, our approach to dry-docking and repairs projects are customized to achieve;

- Highest quality of work-done,
- Most economical budget and cost control,
- Full transparency and shortest time
- Direct cooperation with workshops, shipyards, service providers and technical suppliers
- To be supported by high technical knowledgeable team
- To be transparent cost control
- Direct cooperation with class societies
- To ensure smooth operations in your repair period
- To be your reliable guide for your vessels calling to Turkey/China
- Deep knowledge of full operation and how to carefully arrange all service required
- Technical support through experienced workshops
- Project management during repair period
- Underwater survey inspection
- We deal with any kind of your repair 7/24.

OUR SERVICES

Our services, productions and repair stages are carried out by skilled and certified workers and controlled by expert engineers.

Akdamarine Ship Repair offers wide range of shipyard services;

- Piping Works
- Steel Works
- Electrical Works
- Valve Works
- Blasting & Painting Works
- Docking & Undocking Works
- Special & Intermediate Surveys Engine, Machinery & Propulsion Systems
- Hydraulic & Pneumatic System Repairs
- Repairs of Deck Machinery, Cranes
- Shaft Propeller-Rudder Works
- Spare part supply / Technical Supply / Provision ,Catering ,Stores
(Anchor,Chain,Wire,Lashing Equipment, Safety&Bridge Equipment,Main Engine &Generator)
- On Board Repair & Services
- Safety and Radio Equipment Service
- UTM services (During voyage or during port/anchorage)
- Crane / Rescue Boat Load Tests With Approval Certificate

PIPING WORKS

Renewal of following piping systems

Dismantling of old cracked, bended, leaking, weak and decomposed pipes as per marking and manufacturing new pipes as isometric in workshop. NDT controls in workshop and fitting place on board of the vessel. Pressure test and operation testing of renewed pipe systems and delivering to the ship.

Type of pipe materials used:

- Black pipes
- GRP pipes
- Stainless steel pipes
- CuNiFe pipes
- Galvanized pipes
- Aluminum pipes
- Hydraulic pipes
- Pipe isometrics and tracing systems

Pipe systems done:

- Bilge water system
- Ballast water system
- CO2 system



BLASTING & PAINTING WORKS

General Blasting and Painting Works / Blasting and painting locations.

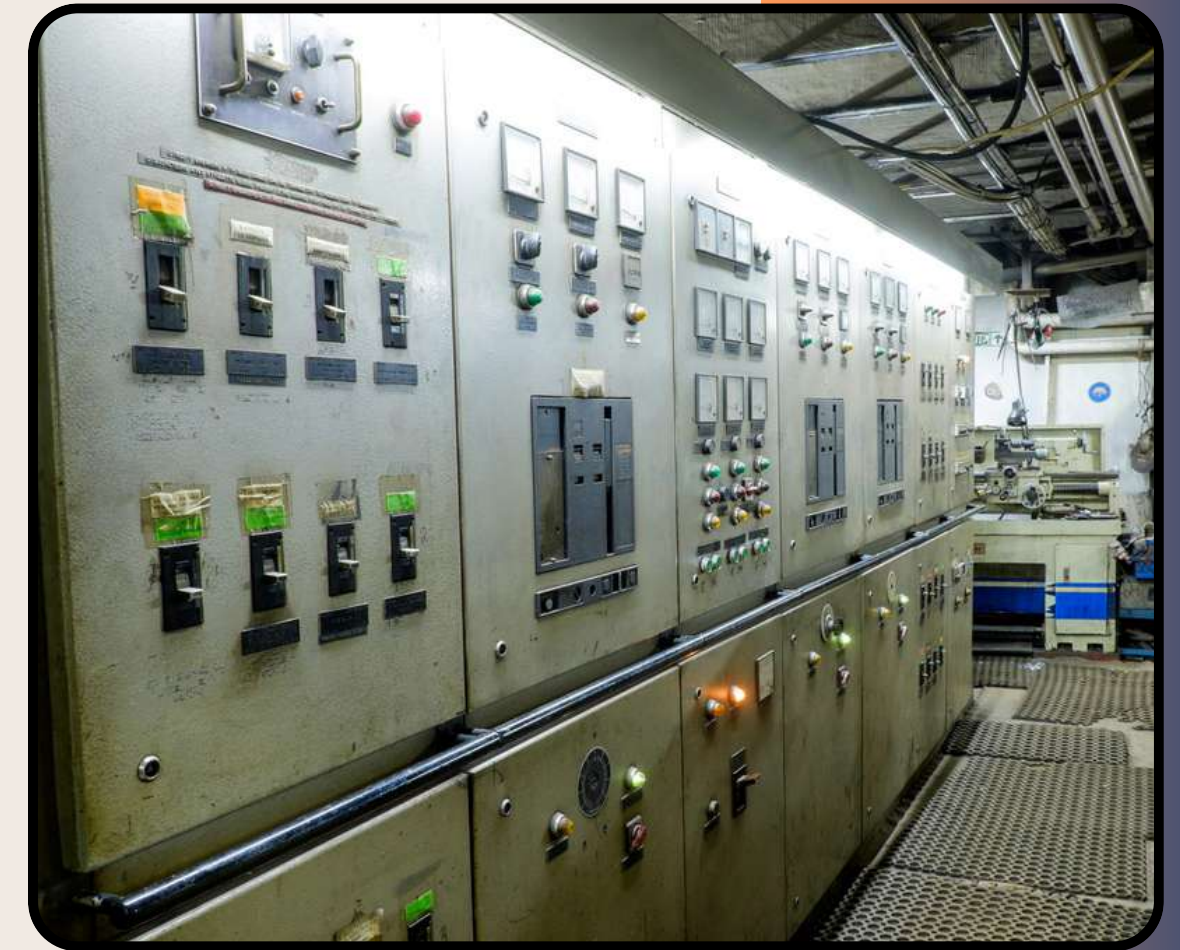
- Shell Plate blasting & painting works
- Sea Chests, bow thruster, Rudder, bilge keel blasting & painting works
- Cargo Hold blasting & painting works
- Hatch cover blasting & painting works
- Hatch cover underneath blasting & painting works
- Hatch coamings blasting & painting works
- Main deck and decks blasting & painting works
- Accommodation blasting & painting works
- Ballast tanks blasting & painting works
- Engine room blasting & painting works
- Fresh water tanks blasting & painting works
- Chain locker blasting & painting works
- Surface preparations
- Washing applications
- Sweeping grit blasting applications
- SA1 grit blasting application
- SA2 and SA 2,5 grit blasting applications



ELECTRICAL WORKS

Repairing & Maintenance of following electrical works:

- General all kinds of cabling and cable renewal works
- General fan motors (ventilation, boiler, inert gas, sanitary fan)
- All kinds of electrical motor (pump, fan, bow thruster, Ex proof, etc)
- Rewinding of all kinds of electrical motor & coil winding
- Genset alternators
- Emergency generator alternators
- Shaft generator alternators
- General cleaning and maintenance of main switchboard
- General cleaning and maintenance of emergency switchboard and other boards
- Balancing of impellers, rotors
- All kinds of calibration works (Temperature, pressure, sensors)
- Control (starter) panels
- Programming and paralleling works
- Trouble shooting and solution on controlling & command systems
(Main engine, genera- tors, steering gear, pitchcontrol systems, cranes etc.)



SHAFT-PROPELLER-RUDDER WORKS

Repairing & maintenance and renewal following work items:

- Dismantling and refitting of shaft coupling
 - Withdrawal and fitting back of the shaft
- Dismantling and refitting of intermediate shaft
 - Dismantling and refitting of fix propeller
- Dismantling and refitting of CPP propeller blades
 - Renewal of simplex seals
 - Machining of chrome liner
 - Machining of propeller blade undersides
- Dismantling and refitting of shaft and rudder bearings
 - Renewal and machining of shaft and rudder bearings
 - Machining of bearing places on board
- Special stainless steel welding of shaft and rudder bearing places in workshop
 - Machining of shaft and rudder bearing places
 - Bow thruster and CPP overhaul

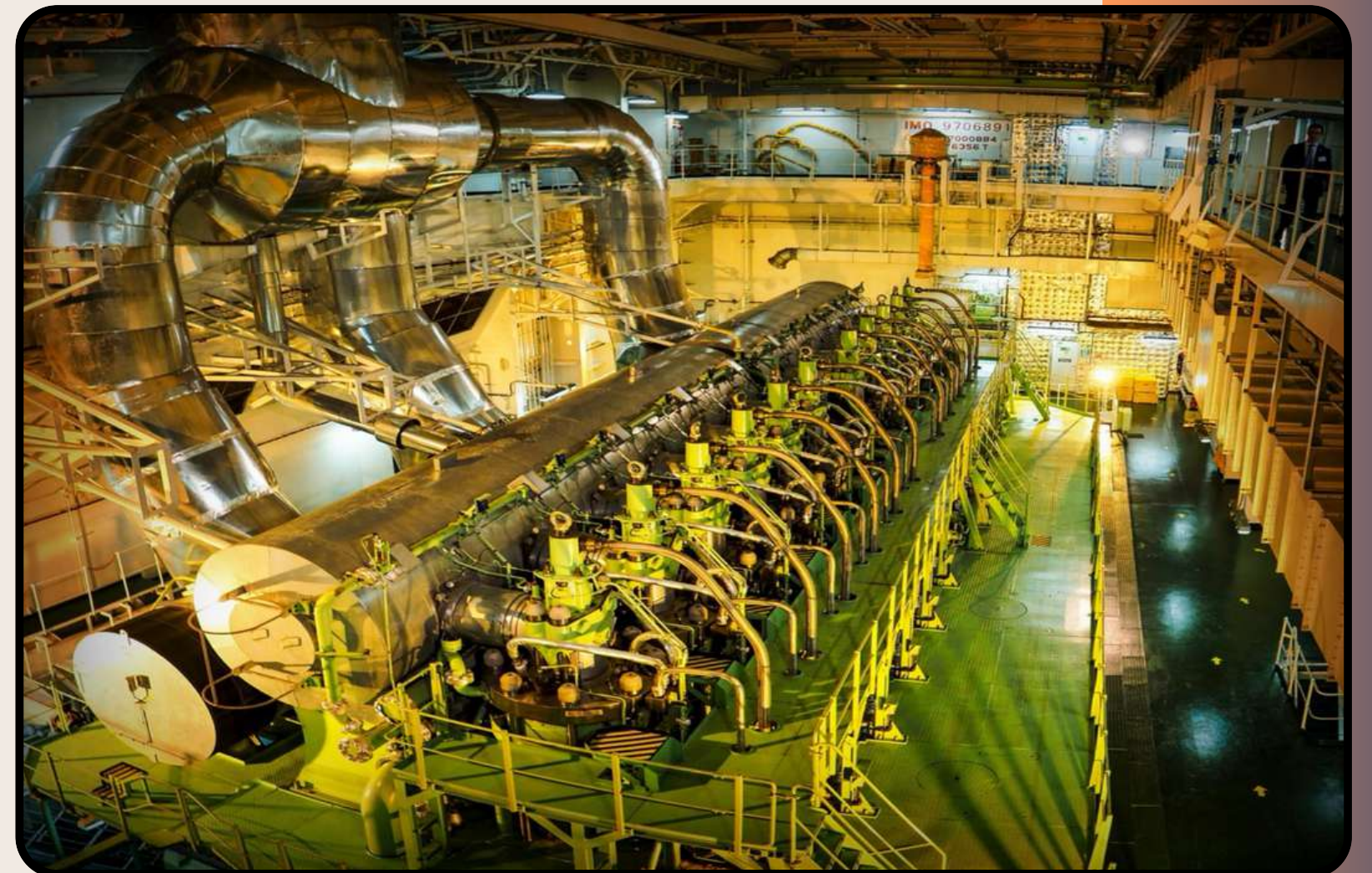


MAIN ENGINE GENERATOR

Maintenance and renewal if need following work items

Overhauling, cleaning, inspecting, maintenance, de-carbonisation, renewing if need, testing, crack testing, before & after measurement and reporting and reassembling after finishing of all works with vessel supplied seals & o-ring and operation testing & delivering to the vessel:

- Air cooler
- Turbo charger
- Governor
- Fuel pumps
- Push rod, push rod roller
- Oil pump
- Cam shaft
- Other maintenance works on engine:
 - Cylinder head (Valve rotator, valve spring, inlet valve, rocker arm, exhaust valve)
 - Exhaust manifold
 - Piston, piston ring, piston pin
 - Crank bearing, Crank shaft main bearing, tie bolts



STEEL WORKS

Renewal, repairing and straightening of following work items;

Firstly NDT inspecting, class inspecting and marking with paint of are as that will be renewed or will be straightened. Renewal of low thicker areas and steels in very bad condition and straightening of deformed areas as permarking by class and vessel representatives.

Other light steel work applications on board



- Cargo hatches & small hatches
- Air vents
- Skylights
- Manholes
- Doors
- Ladders
- Ventilations
- Platforms & ower platforms
- Handrails, handgrips
- Chocks, rollers, bollards
- Reinforcements
- Ship names, draft marks, tank marks
- Gutter bars
- Compression bars
- Foundations
- Windows
- Grills
- Other small round bar, flat bar and angle bar application

VALVE WORKS

Repairing and Maintenance of Valves:

Dismantling, maintenance, overhauling, cleaning, painting, lapping and renewal of seat, handwheel, rod, gasket, bolts, flap, gland packings if need and machining spindle, flap, rod. After finishing of all works testing and presenting to class & owner.

Type of pipe materials used:

- Needle valves
- Check valves
- Pressure relief valves
- Control valves
- Plug valves
- Storm valves
- Diaphragm valves
- Butterfly valves
- Mud-box
- Gate valves
- Globe valves
- Angle valves
- Ball valves
- Filter

Type of location valves:

- General pipe system valves
- Hydraulic valves
- Hydraulic activated remote control valves
- Pneumatic activated remote control valves
- Cargo valves
- Quick closing valves
- Reduction valves
- Isolation valves
- PV valves
- Overboard valves
- Sea chest valves
- Safety valves



BWTS RETROFITS & SCRUBBER SYSTEMS

Renewal, repairing and straightening of following work items;

BWTS Retrofits;

Starting from 3D scanning design & engineering for your BWTS retrofit projects, we supply, manufacture and assemble all necessary materials by offering the best labor and price advantage while the vessel is sailing without any delay/loss of hire and create a considerable cost saving comparing to shipyard prices.

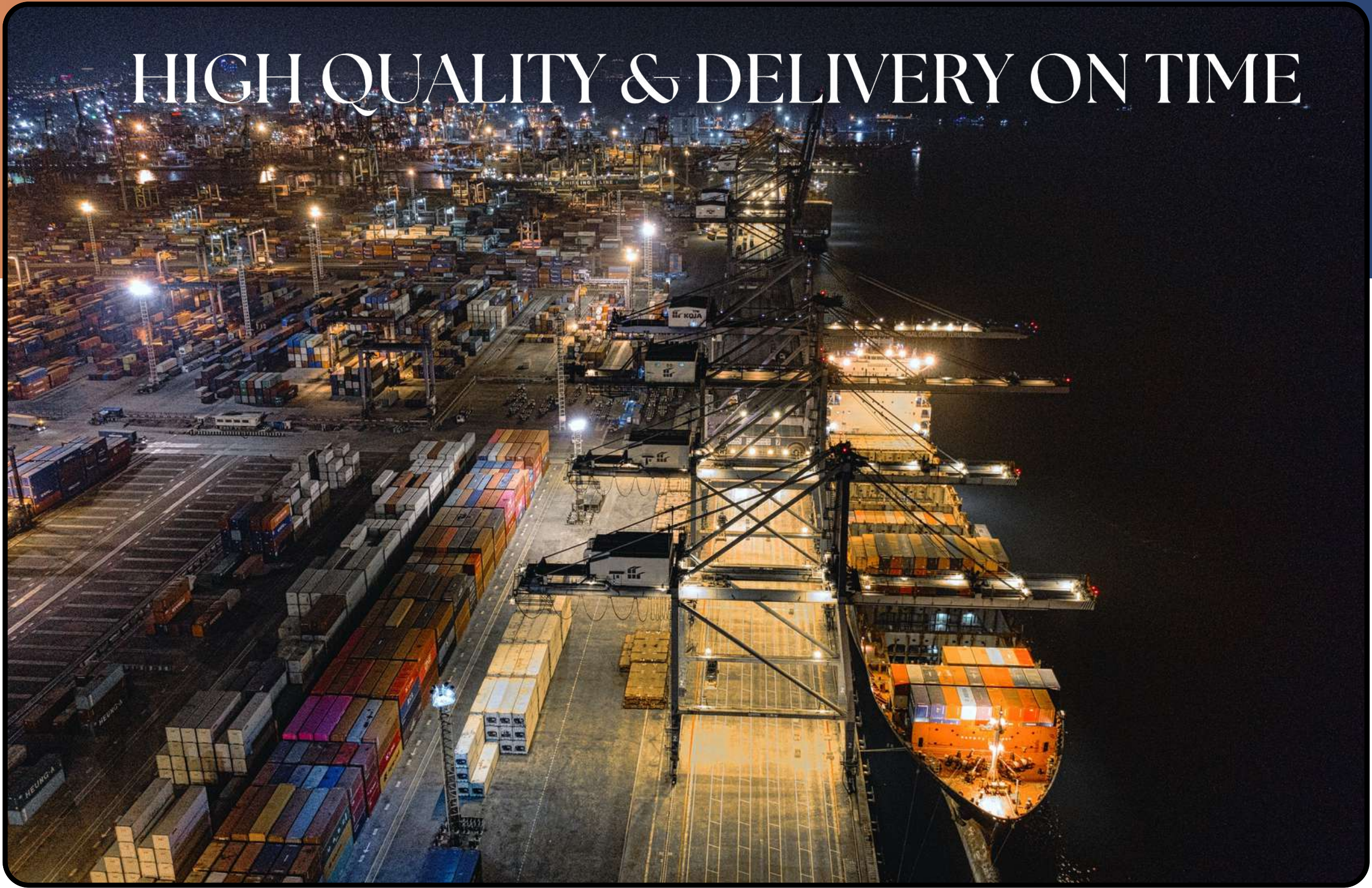
Scrubber Systems;

Akdamarine Ship Repair is installing Scrubbers or Exhaust Gas Cleaning Systems.

These scrubbing systems have been developed and employed to treat exhaust from engines, auxiliary engines and boilers, onshore and onboard marine vessels, to ensure that no damage is done to human life and the environment by toxic chemicals.

AKDAMARINE SHIP REPAIR IS YOUR SOLUTIONS PARTNER FOR BWTS RETROFITS
AND SCRUBBER SYSTEMS

HIGH QUALITY & DELIVERY ON TIME



CONTACT US



+90 533 572 80 37 / +90 530 876 01 43



www.akdamarine.com



mehmet.akdas@akdamarine.com
info@akdamarine.com



Cevizli Mah. 30 Agustos Cad. No:9-11
Maltepe/ISTANBUL